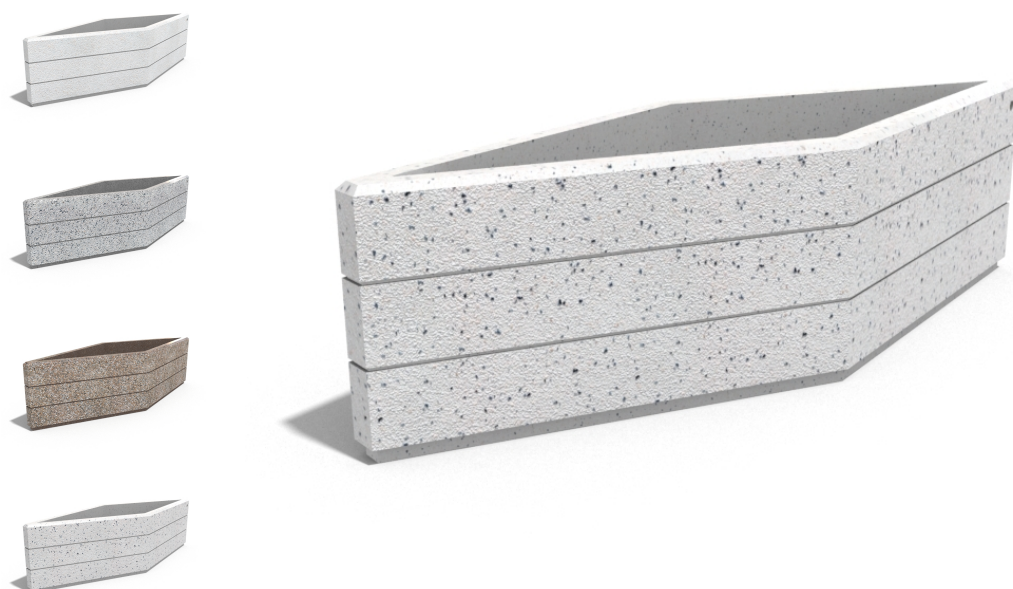




CONCRETE PLANTER 230 exposed aggregate



CIRCLE
Stainless Steel:



81 AISI...

BASE Natural
Marble
aggregates:



42 Brown



51 White



52 Scatter



53 Grey

Model in the product range of concrete planters by Encho Enchev - ETE in the elegant rhomboid shape. The flower pot is made of high-performance concrete and an aggregate of natural marble or granite stones. The particles that make up the aggregate are precisely defined in size and can be combined in different colors. With the modern techniques of p...

Diameter: 240,0 cm

Length: 80,0 cm

Height: 65,0 cm

866,00 €



AR / VR



WEBSITE