



CONCRETE BENCH 332 ER Resysta exposed aggregate

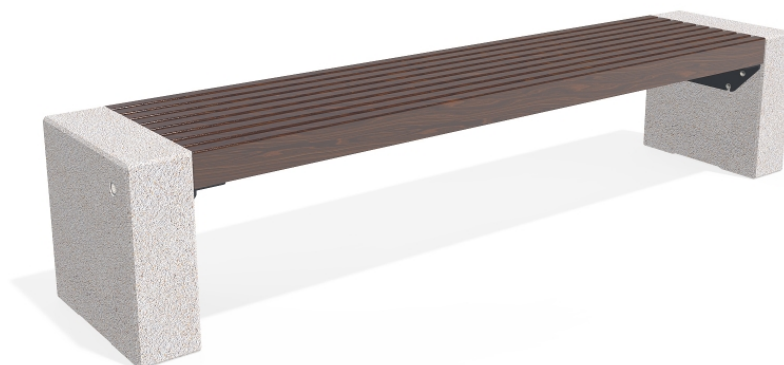


Plate Steel:



RAL 702...

Bracket Steel:



RAL 702...

Tag Stainless
Steel:



81 AISI...

Concrete bench with backrest and seating area made out of certified wood. The legs are produced of high-performance reinforced fiber concrete and natural aggregate. The aggregate structure is a combination of natural marble or granite stones of a certain size in different color combinations. The concrete surface has a characteristic fine relief. ...

Diameter: 220,0 cm

Length: 46,0 cm

Height: 45,0 cm

623,00 €



AR / VR



WEBSITE