

Creating Brands of the Future



CONCRETE BENCH 8

422.00 €

Concrete bench with catchy design. The construction is supported by two dolphin-shaped legs made of high-performance fiber reinforced concrete and natural aggregate. The structure is available in different color combinations and consists of natural marble or granite aggregates. The planks are made of certified wood and specially treated with a coating that protects them from rotting. The concrete surface is with characteristic relief and additionally protected with varnish. This makes the product even more resistant to aggressive weather conditions. The elements connecting the main components are from stainless steel. This concrete bench with marine motifs is part of the product range of Encho Enchev - ETE, oriented to the places for children in the big city. An elegant exterior solution for furnishing of promenades, seaside gardens and parks.

Diameter: 210.0 cm

Length: 92.0 cm

Height: 52.0 cm

Steel

RAL 7024 matt

Natural Marble aggregates

42 Brown

51 White

52 Scatter

53 Grey

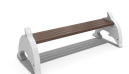
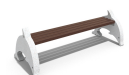
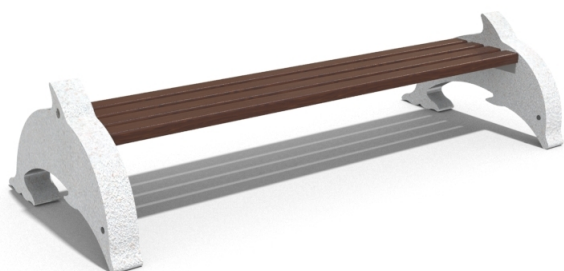
Wood Timber

61 Pine

62 Walnut

64 Rosewood

65 Oak



AR / VR

WEBSITE

