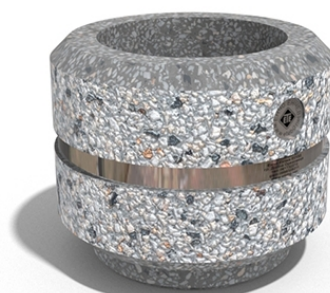




## ROUND CONCRETE PLANTER 19 exposed aggregate



Logo Stainless  
Steel:



81 AISI...

Ring Stainless  
Steel:



81 AISI...

Base Natural  
Marble  
aggregates:



42 Brown



51 White



52 Scatter



53 Grey

Model from the series of round concrete planters by Encho Enchev-ETE, in which the designers have offered a great ratio between height and diameter, turning every park, square or alley into a masterpiece of art. The flowerpot is made out of high-performance concrete and natural embossed aggregate. The aggregate structure is composed of natural marb ...

Diameter: 24.0 cm

Length: 24.0 cm

Height: 21.0 cm



AR / VR



WEBSITE



119.00 €



AR / VR



WEBSITE