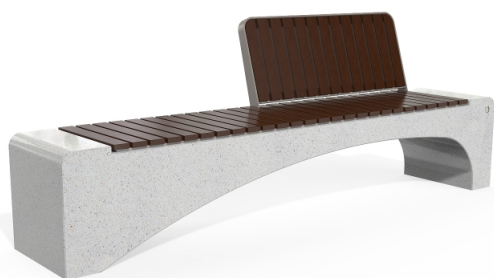
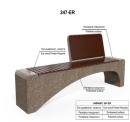
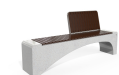


Creating Brands of the Future



CONCRETE BENCH 247 PR Resysta polished aggregate

1,270.00 €

Bench with backrest made out of high-performance reinforced fiber concrete and natural aggregate. The aggregate structure consists of natural marble or granite stones, which can be combined in different colors. The surface is completely polished. The metal components making up the seat and back of the bench are made of stainless steel. The seating area is made of exotic, hard wood - bamboo, and the presence of a backrest creates maximum comfort. Certified wood and concrete are treated with a special protective coating, which makes the product even more resistant to aggressive weather conditions. The design combination between the two materials is a stylish solution for any city.

Diameter: 230.0 cm

Length: 56.0 cm

Height: 84.0 cm

Steel

RAL 7024 matt

Stainless Steel

81 AISI 304

Natural Marble aggregates

22 Brown

31 White

34 Scatter

35 Grey

Wood Timber

Eco wood





AR / VR



WEBSITE

