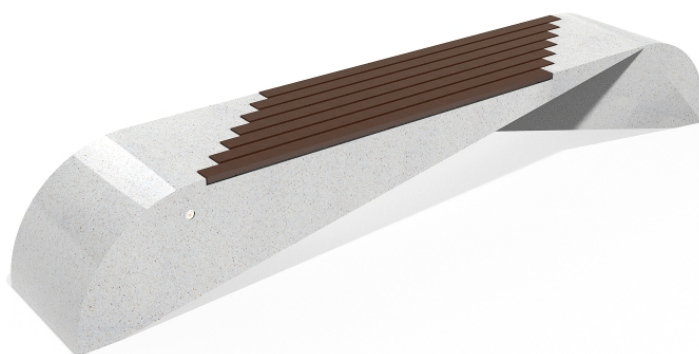




CONCRETE BENCH 232 PR Resysta polished aggregate



BRACKET
Steel:



CIRCLE
Stainless Steel:



BASE Natural
Marble
aggregates:



22 Brown



31 White



34 Scatter



35 Grey

The bench is made of high-performance reinforced fiber concrete and polished natural aggregate. The structural marble and granite stones are natural and with different color combinations. The concrete bench is combined with certified bamboo hardwood. Additional treatment of the polished surface with a protective coating makes the product even more ...

Diameter: 295.0 cm

Length: 50.0 cm

Height: 45.0 cm

2,380.00 €



AR / VR



WEBSITE