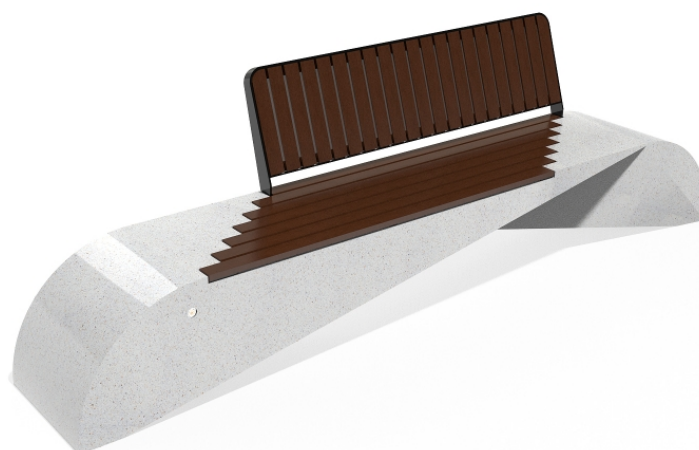
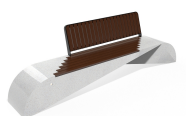




CONCRETE BENCH 248 PR Resysta polished aggregate



BRACKET
Steel:



RAL 702...

CIRCLE
Stainless Steel:



81 AISI...

BOLT Stainless
Steel:



81 AISI...

Bench with backrest from the product range of concrete benches by Encho Enchev - ETE with a characteristic design, giving it individuality and style. The bench is made out of high-performance reinforced fiber concrete and polished aggregate. The marble and granite stones that form the aggregate structure are natural and have the opportunity for dif ...

Diameter: 295.0 cm

Length: 61.0 cm

Height: 84.0 cm

2,834.00 €



AR / VR



WEBSITE